



Display Stands

SLATWALL DISPLAY ACCESSORIES

Quik Lok's most popular choice to convert in-door store walls into a complete merchandising system. Quik Lok slatwall accessories are the ideal solution to hold heavier musical merchandise like solid-body electric guitars, keyboards, sound modules, mixers, speakers, multi-track recorders, amps, guitars, computer peripherals, cymbals, and smaller music accessories such as instrument cables, straps, sheet music and others.



SLATWALL DISPLAY ACCESSORIES

- Quik-Lok's line of tiers, shelves and guitar holders designed for slatwall display
- Easy, safe and space-saving way to properly merchandise guitars, keyboards, sound modules, small mixers and amps, speakers, and computer peripherals
- Solid, heavy duty steel construction
- Black powder-coated finish

SW/602

- Short slatwall hanger for cymbals

Depth: 9.8" - 25 cm
Color: Black



SW/602L

- Long slatwall hanger for cymbals

Depth: 11.8" - 30 cm
Color: Black



SW/220L

- Slatwall double-wire display hook

Length: 7.9" - 20 cm
Color: Black



SW/222L

- Slatwall single-wire display hook

Length: 7.9" - 20 cm
Color: Black



Display Stands



SBK/20

- Multi-angle, depth-adjustable tier set for slatwall
- Designed to allow for 3 angle adjustments (1 straight, 2 slant angles).
- Steel safety pin to ensure maximum strength and safety.
- Two width-adjustable arms allow to accommodate any length product.
- Telescoping arms will hold any size keyboard, mixer, multi-track recorder, amp from 14.2" to 19.7" (36 to 50 cm) deep.

Depth range: from 14.2" to 19.7" from 36 to 50 cm
 Weight capacity: 50 lb - 22.6 kg
 Weight: 4 lb - 1.8 kg
 Color: Black



SBS/649

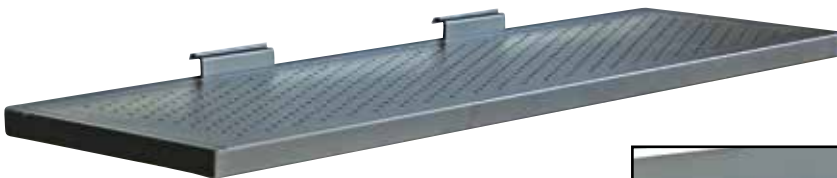
- Slatwall Large Perforated Shelf

Width: 18.5" - 47 cm
 Depth: 11.8" - 30 cm
 Weight capacity: 50 lb - 22.6 kg
 Weight: 4 lb - 1.8 kg
 Color: Black

SBS/649L

- Extra-large perforated metal shelf for slatwall display

Width: 45.27" - 115 cm
 Depth: 12.6" - 32 cm
 Weight capacity: 100 lb - 45 kg
 Weight: 14 lb - 6.3 kg
 Color: Black



SLATWALL GUITAR HANGERS WITH PATENTED SELF-LOCKING YOKE

- Quik Lok introduces a new series of slatwall guitar hangers incorporating an ingenious device that allows for a secure and space-saving way to hold and display any size electric/acoustic guitar and bass.
- When the guitar is placed into the stand yoke, the instrument's weight will automatically drive the lateral safety barriers incorporated in the yoke to engage. The safety barriers turn down to lock the guitar neck securely in place, preventing the instrument from accidentally falling off the wall. When the guitar is lifted from the stand the security barriers will simultaneously turn back to their original position to free the instrument.
- Durable, smooth rubberized padding on yoke protects guitars from scratches and will not mar finish.
- Hanger swivels to accommodate all headstock shapes



SW/702

- Slatwall Guitar Hanger with self-locking yoke

Depth (wall to inside of holder):	4.13" - 10.5 cm
Total depth:	6.1" - 15.5 cm
Width:	4.33" - 11 cm
Yoke inner width:	0.20" - 53 mm
Weight capacity:	25 lb - 12.5 kg
Weight:	0.8 lb - 0.36 kg
Color:	Black



SW/702L

- Slatwall Guitar Hanger with self-locking yoke and long brace

Depth (wall to inside of holder):	9.45" - 24 cm
Total depth:	11.22" - 28.5 cm
Width:	4.33" - 11 cm
Yoke inner width:	0.20" - 53 mm
Weight capacity:	25 lb - 12.5 kg
Weight:	1.18 lb - 0.53 kg
Color:	Black



SW/702XL

- Slatwall Guitar Hanger with self-locking yoke and extra long brace

Depth (wall to inside of holder):	11.4" - 29 cm
Total depth:	13.2" - 33.5 cm
Width:	4.33" - 11 cm
Yoke inner width:	0.20" - 53 mm
Weight capacity:	25 lb - 12.5 kg
Weight:	1.2 lb - 0.54 kg
Color:	Black



CLASSIC SERIES SLATWALL GUITAR HANGERS



SBG/4

- Slatwall Guitar Hanger with Raised Front Forks

Depth (from wall to inside of holder):	3.6" - 9 cm
Total depth:	6.3" - 16 cm
Width:	3.5" - 9 cm
Weight capacity:	25 lb - 12.5 kg
Weight:	0.6 lb - 0.3 kg
Color:	Black



SBG/14

- Slatwall Guitar Hanger with Raised Front Forks and long brace
- 180° rotating forks can be adjusted either right angle or left-angle from wall

Depth (from wall to inside of holder):	7.5" - 19 cm
Total depth:	11" - 28 cm
Width:	3.5" - 9 cm
Weight capacity:	25 lb - 12.5 kg
Weight:	0.8 lb - 0.4 kg
Color:	Black



SBG/14L

- Slatwall Guitar Hanger with Raised Front Forks and extra long brace
- 180° rotating forks can be adjusted either right-angle or left-angle from wall

Depth (from wall to inside of holder):	9.6" - 24.5 cm
Total depth:	13" - 33 cm
Width:	23.2" - 59 cm
Cradle depth opening:	3.5" - 9 cm
Weight capacity:	25 lb - 12.5 kg
Weight:	1.1 lb - 0.5 kg
Color:	Black

CLASSIC SERIES WALL-MOUNTED GUITAR HANGERS

- Safe, space-saving way to hold and display guitars
- Solid all-steel construction
- Hanger swivels to accommodate all headstock shapes
- Soft, rubber cushioning protects guitar neck
- Supplied with all mounting hardware

GS/402

- Guitar Wall Hanger with Oval Contour
- Designed to insert guitar in sideways and turn

Depth (from wall to inside of holder):	3.6" - 9 cm
Total depth:	6.3" - 16 cm
Width:	3.5" - 9 cm
Diameter of mounting plate:	3.3" - 8.5 cm
Weight capacity*:	25 lb - 12.5 kg
Weight:	0.6 lb - 0.3 kg
Color:	Black

*[secured directly to wall stud]



GS/403

- Guitar Wall Hanger with Raised Front Forks
- Designed to lift guitar over front forks

Depth (from wall to inside of holder):	3.6" - 9 cm
Total depth:	6.3" - 16 cm
Width:	3.5" - 9 cm
Diameter of mounting plate:	3.3" - 8.5 cm
Weight capacity*:	25 lb - 12.5 kg
Weight:	0.6 lb - 0.3 kg
Color:	Black

*[secured directly to wall stud]



GS/454

- Guitar wall hanger with raised front forks and long brace 180° rotating forks can be adjusted either right-angle or left-angle from wall

Depth (from wall to inside of holder):	7.7" - 19.5 cm
Total depth:	11.2" - 28.5 cm
Width:	3.5" - 9 cm
Diameter of mounting plate:	3.3" - 8.5 cm
Weight capacity*:	25 lb - 12.5 kg
Weight:	1 lb - 0.45 kg
Color:	Black

*[secured directly to wall stud]



GS/454L

- Guitar wall hanger with raised front forks and extra long brace 180° rotating forks can be adjusted either right-angle or left-angle from wall

Depth (from wall to inside of holder):	9.6" - 24.5 cm
Total depth:	13" - 33 cm
Width:	3.5" - 9 cm
Diameter of mounting plate:	3.3" - 8.5 cm
Weight capacity*:	25 lb - 12.5 kg
Weight:	1.2 lb - 0.55 kg
Color:	Black

*[secured directly to wall stud]



GS/410

- Horizontal Acoustic Guitar Wall Hanger

Depth (from wall to inside of holder):	3" - 7.5 cm
Total depth:	8.5" - 21.5 cm
Width:	23.2" - 59 cm
Cradle depth opening:	5.1" - 13 cm
Weight capacity:	25 lb - 12.5 kg
Weight:	3.3 lb - 1.5 kg
Color:	Black



GS/413

- Horizontal Electric Guitar Wall Hanger

Depth (from wall to inside of holder):	3" - 7.5 cm
Total depth:	6.3" - 16 cm
Width:	23.2" - 59 cm
Cradle depth opening:	2" - 5 cm
Weight capacity:	25 lb - 12.5 kg
Weight:	3.3 lb - 1.5 kg
Color:	Black



GUITAR WALL-MOUNTS WITH NEW PATENTED SELF-LOCKING YOKE DESIGN

- Quik Lok introduces a new series of guitar wall-mounts incorporating an ingenious device that allows for a secure and space-saving way to hold and display any size electric/acoustic guitar and bass.
- When the guitar is placed into the stand yoke, the instrument's weight will automatically drive the lateral safety barriers incorporated in the yoke to engage. The safety barriers turn down to lock the guitar neck securely in place, preventing the instrument from accidentally falling off the wall. When the guitar is lifted from the stand the security barriers will simultaneously turn back to their original position to free the instrument.
- Durable, smooth rubberized padding on yoke protects guitars from scratches and will not mar finish.
- Hanger swivels to accommodate all headstock shapes



GS/701

- Guitar Wall-Mount with self-locking yoke
- Supplied with all mounting hardware

Depth (wall to inside of holder):	4.33" - 11 cm
Total depth:	6.1" - 15.5 cm
Width:	4.33" - 11 cm
Diameter of mounting plate:	3.3" - 8.5 cm
Yoke inner width:	0.20" - 53 mm
Weight capacity:	25 lb - 12.5 kg
Weight:	0.8 lb - 0.36 kg
Color:	Black



GS/701L

- Guitar Wall-Mount with self-locking yoke and long brace
- Supplied with all mounting hardware

Depth (wall to inside of holder):	10.23" - 26 cm
Total depth:	12" - 30.5 cm
Width:	4.33" - 11 cm
Diameter of mounting plate:	3.94" - 10 cm
Yoke inner width:	0.20" - 53 mm
Weight capacity:	25 lb - 12.5 kg
Weight:	1.18 lb - 0.53 kg
Color:	Black



GS/701XL

- Guitar Wall-Mount with self-locking yoke and extra long brace
- Supplied with all mounting hardware

Depth (wall to inside of holder):	12.2" - 31 cm
Total depth:	13.97" - 35.5 cm
Width:	4.33" - 11 cm
Diameter of mounting plate:	3.94" - 10 cm
Yoke inner width:	0.20" - 53 mm
Weight capacity:	25 lb - 12.5 kg
Weight:	1.2 lb - 0.54 kg
Color:	Black



Display Stands

REVOLVING DISPLAY STAND FOR 8 GUITARS

- Free-standing revolving display system designed to optimize store space and maximize profits.
- Holds up to 8 electric/acoustic guitars firmly in place.
- Arc-welded steel construction column with sturdy four-leg base for absolute stability.
- Ideal for store displays, trade shows or studios.
- Fast to set up and assemble, can be folded down without tools for easy transport.
- Available in black finish.

GS/405

- Revolving display stand for 8 electric/acoustic guitars

Set-up height:	78.74" - 200 cm
Base spread diameter:	33" - 84 cm
Center tubing size:	35 x 35 mm
Weight capacity:	133 lb - 60 kg
Weight:	20 lb - 9 kg
Color:	Black

